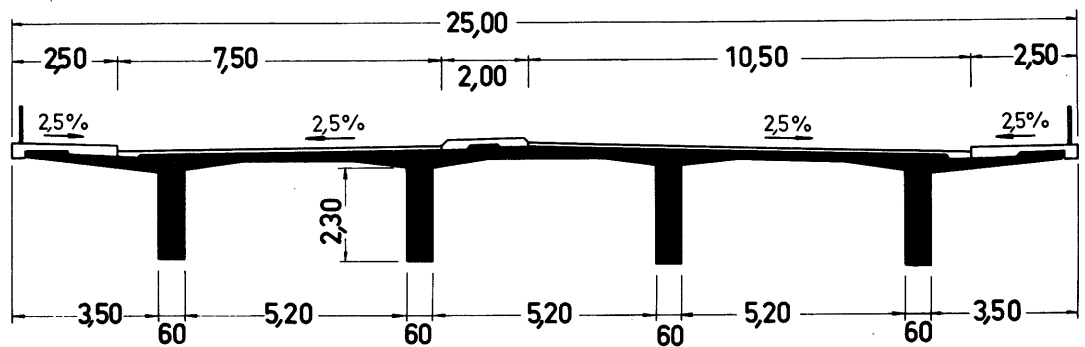
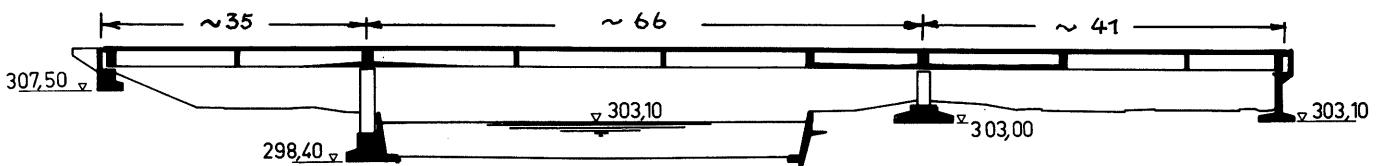
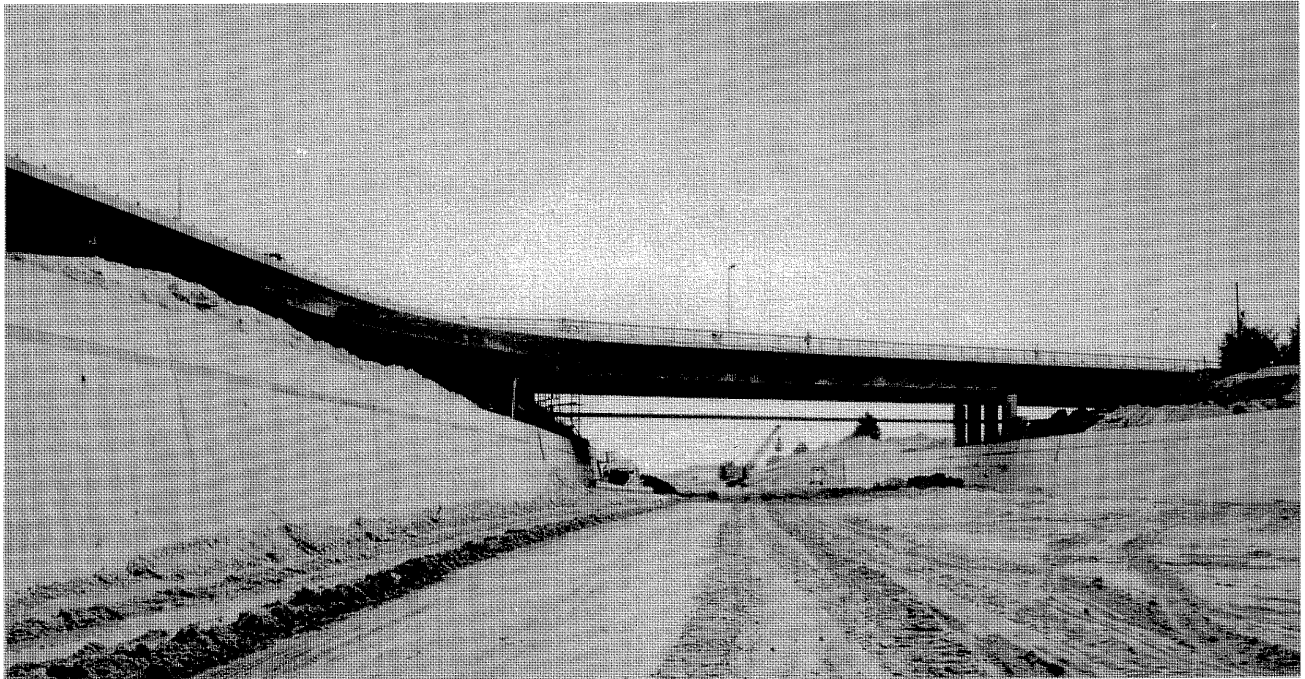


Straßenbrücke Verbindungsstraße West Haltung Kriegenbrunn, Los C11, Kanal-km 61,59



System: 3. Teil Hohlkasten
 4-stegiger Spann-
 beton-Plattenbalken

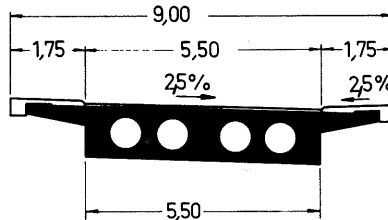
Bauherr: Rhein-Main-Donau AG

Baufirma: Strabag Bau AG
 Held & Francke

Bauzeit: Juli 1969 – März 1971

Baukosten: DM 7 735 033,59

Baukosten/m²: DM 860.—



Rampenquerschnitt

